

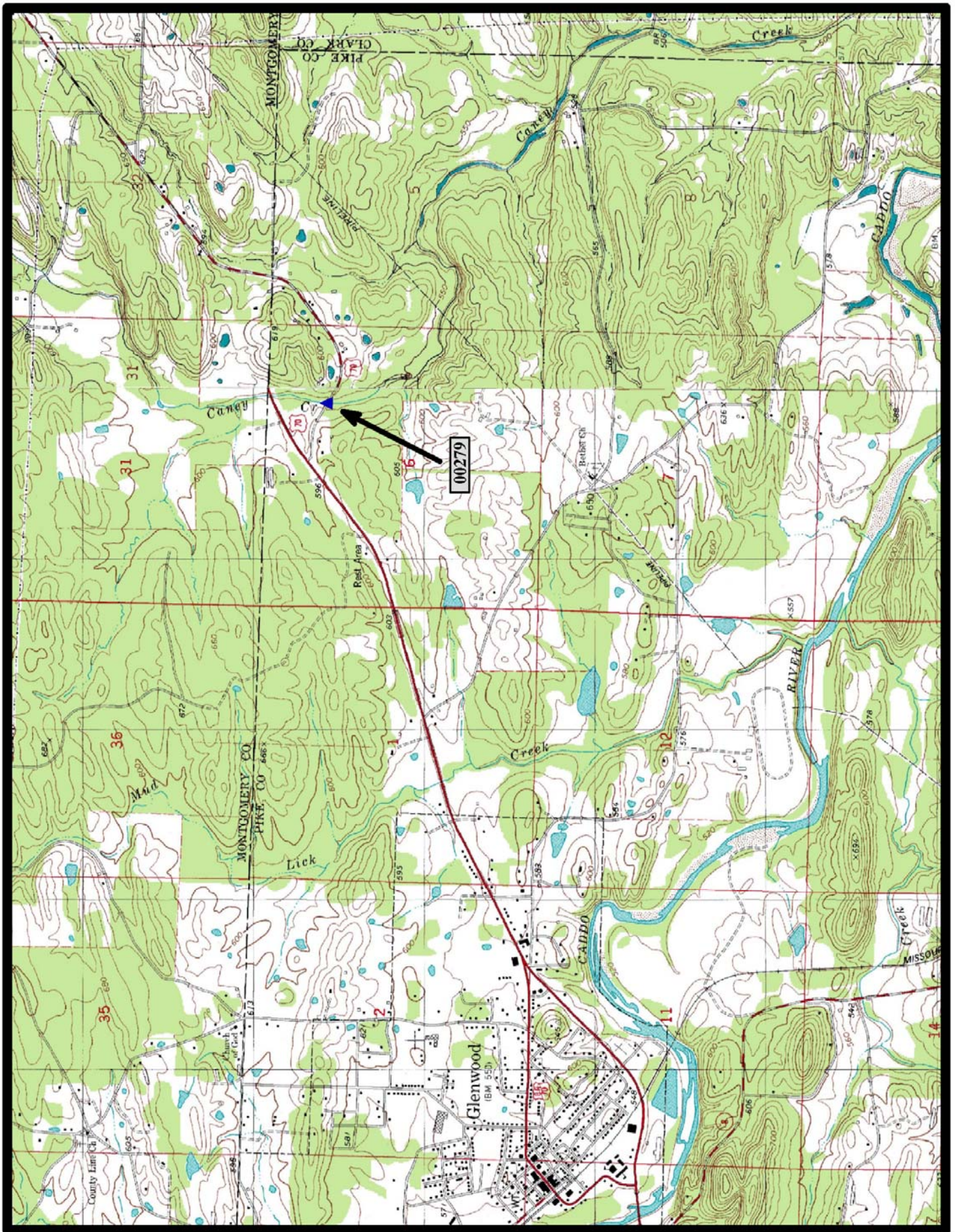
- ▲ In-Service Concrete Arch, Deck - Open Spandrel (12)
- ⊘ Demolished NR Concrete Arch, Deck - Open Spandrel (3)
- Preserved Concrete Arch, Deck - Open Spandrel (1)

## Concrete Arch, Deck - Open Spandrel Bridges





**HISTORIC BRIDGE #00279**  
**COUNTY ROAD 721 (OLD US 70)**  
**PIKE COUNTY**  
**CONCRETE ARCH, DECK - OPEN SPANDREL**  
**CROSSES - CANEY CREEK**  
**DATE OF CONSTRUCTION - 1928**  
**BUILDER - COOK & RANSOM, OTTAWA, KS**  
**(DESIGNED BY THE LUTEN BRIDGE COMPANY)**  
**HISTORIC BRIDGE INVENTORY DATE - 2005**  
**SHPO NUMBER - PL0035**  
**HAER NUMBER -**  
**DATE LISTED ON NATIONAL REGISTER -**  
**LAT./LONG. 34:20:17.41, -93:30:03.52**

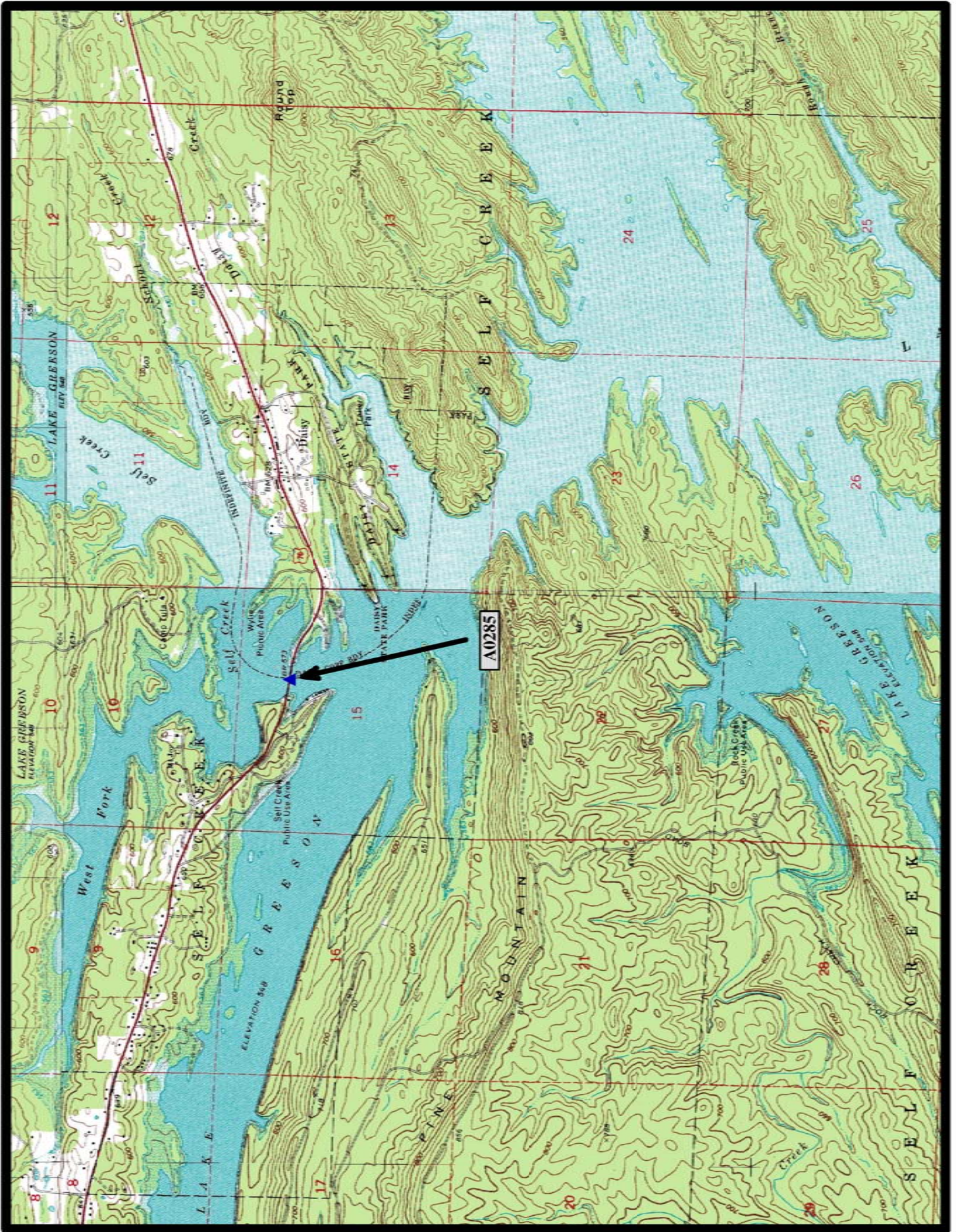


↑  
North

Glenwood, Amity 7.5 min. Quads



**HISTORIC BRIDGE #A0285**  
**US HIGHWAY 70**  
**PIKE COUNTY**  
**CONCRETE ARCH, DECK - OPEN SPANDREL**  
**CROSSES - LAKE GREESON**  
**DATE OF CONSTRUCTION - 1949**  
**BUILDER - D. F. JONES CONSTRUCTION COMPANY, LITTLE ROCK. AR**  
**HISTORIC BRIDGE INVENTORY DATE - 2000**  
**SHPO NUMBER - PI0025**  
**HAER NUMBER -**  
**DATE LISTED ON NATIONAL REGISTER - 6/9/2000**  
**LAT./LONG. 34:14:11.56, -93:45:24.34**

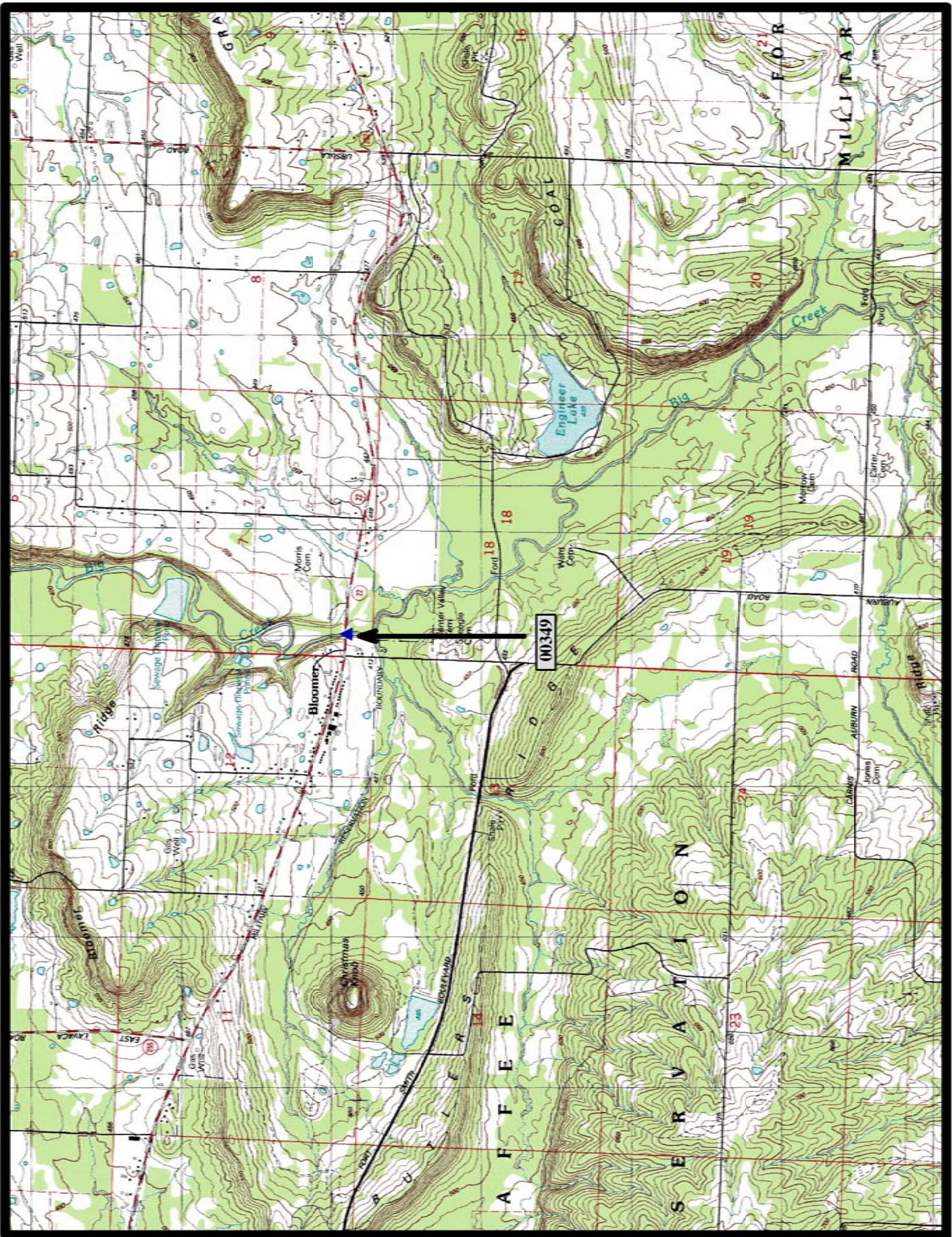


North

Lincoln 7.5 min. Quad



**HISTORIC BRIDGE #00349**  
**STATE HIGHWAY 22**  
**SEBASTIAN COUNTY**  
**CONCRETE ARCH, DECK - OPEN SPANDREL**  
**CROSSES - BIG CREEK**  
**DATE OF CONSTRUCTION - 1928**  
**BUILDER - MAXWELL CONSTRUCTION COMPANY, COLUMBUS, KS**  
**HISTORIC BRIDGE INVENTORY DATE - 2005**  
**SHPO NUMBER -**  
**HAER NUMBER -**  
**DATE LISTED ON NATIONAL REGISTER -**  
**LAT./LONG. 35:19:02.90, -94:12:56.09**



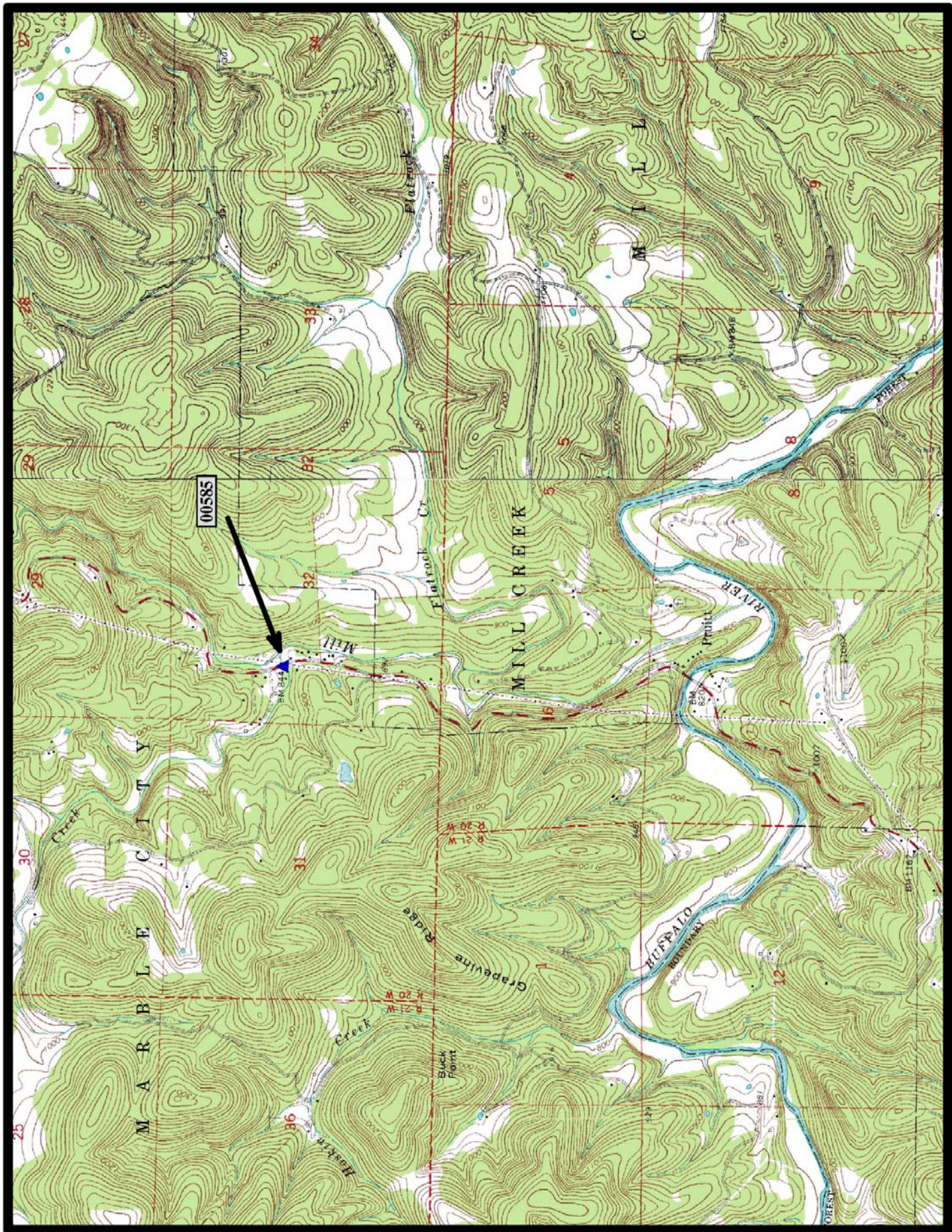
North  
↑

Lavaca 7.5 min. Quad





**HISTORIC BRIDGE #00585**  
**STATE HIGHWAY 7**  
**NEWTON COUNTY**  
**CONCRETE ARCH, DECK - OPEN SPANDREL**  
**CROSSES - HARP CREEK**  
**DATE OF CONSTRUCTION - 1928**  
**BUILDER - LUTEN BRIDGE COMPANY, LITTLE ROCK, AR**  
**HISTORIC BRIDGE INVENTORY DATE - 1987**  
**SHPO NUMBER - NW0028**  
**HAER NUMBER - AR-9**  
**DATE LISTED ON NATIONAL REGISTER - 4/9/1990**  
**LAT./LONG. 36:04:57.63, -93:08:13.95**



↑  
North

Jasper 7.5 min. Quad